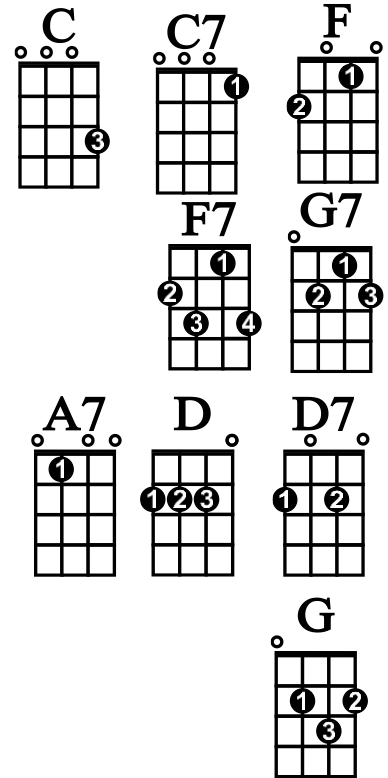


# Blue Moon of Kentucky in C, F

Intro  $\frac{3}{4}$  time: |C |C<sup>7</sup> |F |F |C |G<sup>7</sup> |C |C

## Midcoast Ukes

MidcoastUkes.org



### Verse 1 - SLOW:

I said blue moon of Ken- tucky keep on shining

Shine on the one that's gone and proved un- true

### Verse 2:

I said blue moon of Ken- tucky keep on shining

Shine on the one that's gone and left me blue

### Bridge - All Sing:

It was on a moonlight night the stars were shining bright

When they whispered from on high your love has said good- bye

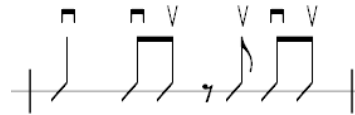
### Verse 3:

I said blue moon of Ken- tucky keep on shining

Shine on the one that's gone and said good- bye

Blue Moon of Kentucky – 2

**SWITCH TO 4/4 time**



**Intro: |C |C listen for count in – Calypso strum**

**Verse 4 – Slow – Patsy Cline in C:**

|C                    |C<sup>7</sup>                    |F                    |F  
 I said blue moon of Ken- tucky keep on shining  
 |C                    |C                    |G<sup>7</sup>                    |G<sup>7</sup>  
 Shine on the one that's gone and proved un- true

**Verse 5:**

|C                    |C<sup>7</sup>                    |F                    |F  
 I said blue moon of Ken- tucky keep on shining  
 |C                    |G<sup>7</sup>                    |C                    |C<sup>7</sup>  
 Shine on the one that's gone and left me blue

**Bridge – All Sing:**

|F                    |F<sup>7</sup>                    |C                    |C<sup>7</sup>  
 It was on a moonlight night the stars were shining bright  
 |F                    |F<sup>7</sup>                    |C                    |G<sup>7</sup>  
 When they whispered from on high your love has said good- bye

**Verse 6 – All Sing:**

|C                    |C<sup>7</sup>                    |F                    |F  
 I said blue moon of Ken- tucky keep on shining  
 |C                    |G<sup>7</sup>                    |C                    |C  
 Shine on the one that's gone and said good- bye

**KEY CHANGE to F! - still 4/4 time:**

**Intro: |F |F |F |F listen for count in**

**ELVIS INTRO:**

|F |F |B<sup>b</sup> |B<sup>b</sup> |F |F                    |C |C  
 Blue moon, --blue moon, --blue moon --Keep shining bright  
 |F                    |F<sup>7</sup>                    |B<sup>b</sup>                    |B<sup>b</sup>m  
 Blue moon, keep on shining bright You're gonna bring me back my baby tonight  
 |F |C                    |F |F  
 Blue moon, --keep shining bright,

Blue Moon of Kentucky - 3

**PLAY ENTIRE SONG IN F like Elvis – rock ‘n’ roll**

**Verse 7 – Faster – Elvis Presley :**

          |F          |F<sup>7</sup>          |B<sup>b</sup>          |B<sup>b</sup>  
I said blue moon of Ken- tucky keep on shining  
          |F          |F          |C<sup>7</sup>          |C<sup>7</sup>  
Shine on the one that's gone and proved un- true

**Verse 8:**

          |F          |F<sup>7</sup>          |B<sup>b</sup>          |B<sup>b</sup>  
I said blue moon of Ken- tucky keep on shining  
          |F          |C<sup>7</sup>          |F          |F  
Shine on the one that's gone and left me blue

**INSTRUMENTAL – 4/4 time in key of F: (Verse 7 + 8) - FAST**

|F |F<sup>7</sup> |B<sup>b</sup> |B<sup>b</sup> |F |F |C<sup>7</sup> |C<sup>7</sup> |F |F<sup>7</sup> |B<sup>b</sup> |B<sup>b</sup> |F |C<sup>7</sup> |F |F<sup>7</sup>

**Bridge – All Sing:**

          |B<sup>b</sup>          |B<sup>b7</sup>          |F          |F<sup>7</sup>  
It was on a moonlight night the stars were shining bright  
          |B<sup>b</sup>          |B<sup>b7</sup>          |F          |C<sup>7</sup>  
When they whispered from on high your love has said good- bye

**Verse 9 – All Sing:**

          |F          |F<sup>7</sup>          |B<sup>b</sup>          |B<sup>b</sup>  
I said blue moon of Ken- tucky keep on shining  
          |F          |C<sup>7</sup>          |F          |F  
Shine on the one that's gone and said good- bye

**ENDING – All Sing:**

          |F          |C<sup>7</sup>          |F          |F  
Shine on the one that's gone and said good- bye  
          |F          |C<sup>7</sup>          |F          |F // hold  
Shine on the one that's gone and said good- bye